



3 bed terraced house to buy in

Stonecross, Ashington, Northumberland,
NE63 8EE

£125,000

🏠 x3 🚿 x1 🚻 x1

Tenure

Freehold

On Street parking

Property features

- ✓ Three Bedrooms
- ✓ End Terrace House
- ✓ D/G & GCH
- ✓ Front & Rear Gardens
- ✓ Popular West End Location

Key Information

- ✓ Council Tax: Band A
- ✓ Heating supply: Gas

Description

THREE BEDROOMS - END TERRACE HOUSE - POPULAR WEST END LOCATION - SPACIOUS FAMILY HOME

We are pleased to welcome to the market this spacious three bedroom end terrace house located at Stonecross in Ashington. Close to the town centre and all its amenities and only a short walk away to the train station offering good transport links to other nearby towns as well as bus routes.

Benefitting from double glazing and gas heating the property comprises: entrance porch, lounge, kitchen/diner, downstairs wc, three bedrooms and a bathroom.

With a lawned garden to the front and an enclosed garden to the rear.

We urge early inspections to avoid disappointment.

Call us now to book your viewing 01670 568096 or email us ashington@pattinson.co.uk

EPC: TBC

Council Tax Band: A

Tenure: Freehold

Price: £125,000

Property Type: Terraced House

Parking: On Street

Heating: Gas

Entrance Porch

Via double glazed door
-Door to lounge



Living Room

5.47m x 4.16m (17'11" x 13'7")

Double glazed window to front
-Tv point
-Radiator
-Door to kitchen



Additional Image



Kitchen

5.54m x 3.45m (18'2" x 11'3")

Double glazed window & door to rear
-Fitted wall & base units with work tops
-Integrated oven & hob with extractor hood
-Integrate wine cooler
-Integrated fridge/freezer
-Radiator
-Stairs to first floor



Additional Image 1



Downstairs Wc

- Double glazed window
- Low level wc
- Wash hand basin
- Radiator



First Floor Landing

- Storage cupboard



Bedroom 1

2.90m x 4.13m (9'6" x 13'6")

- Double glazed window
- Radiator



Bedroom 2

2.63m x 4.03m (8'7" x 13'2")

- Double glazed window
- Radiator



Bedroom 3

2.61m x 2.61m (8'6" x 8'6")

- Double glazed window
- Radiator
- Storage cupboard



Bathroom

2.81m x 1.66m (9'2" x 5'5")

- Double glazed window
- Corner panelled bath
- Corner shower cubicle
- Low level wc
- Pedestal wash hand basin
- Tiled walls

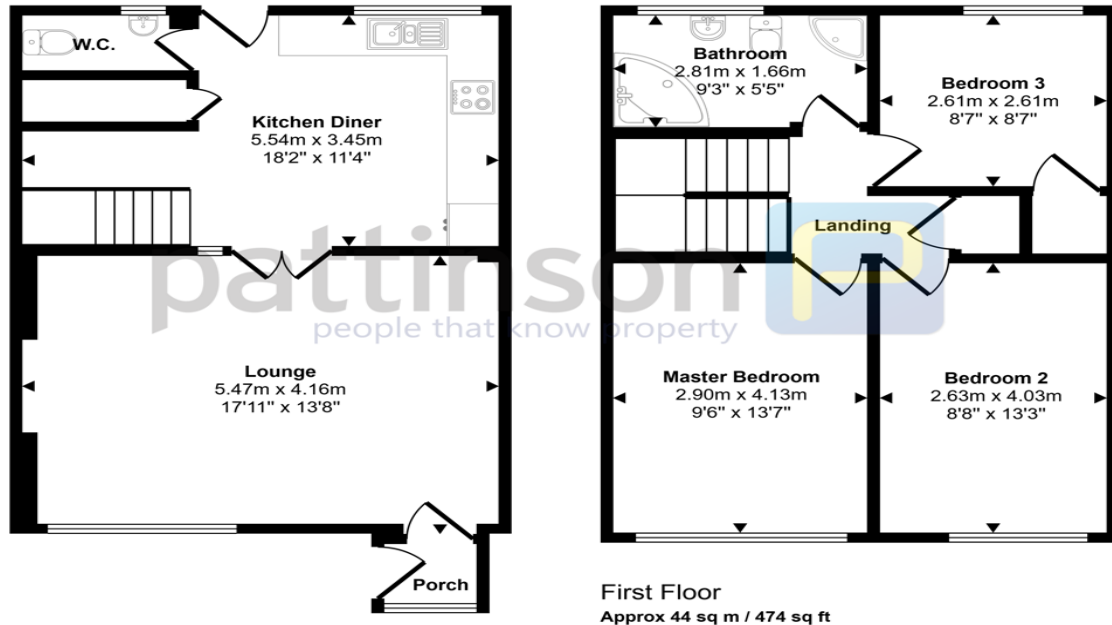


Rear Garden

- Enclosed garden with lawn area
- Brick outhouse



Approx Gross Internal Area
87 sq m / 939 sq ft



Ground Floor
Approx 43 sq m / 465 sq ft

First Floor
Approx 44 sq m / 474 sq ft

This floorplan is only for illustrative purposes and is not to scale. Measurements of rooms, doors, windows, and any items are approximate and no responsibility is taken for any error, omission or mis-statement. Icons of items such as bathroom suites are representations only and may not look like the real items. Made with Made Snappy 360.

Stonecross, Ashington, Northumberland, NE63 8EE

Contact your local branch today for more information on this property:
G&T Properties Dudley Road, Brierley Hill, West Midlands, DY5 1HA,
<https://www.gandtproperties.co.uk/>

These particulars, whilst believed to be accurate are set out as a general outline only for guidance and do not constitute any part of an offer or contract. Intending purchasers should not rely on them as statements of representation of fact, but must satisfy themselves by inspection or otherwise as to their accuracy. No person in this firm's employment has the authority to make or give any representation or warranty in respect of the property.

