



3 bed terraced house to buy in

High Axwell, Blaydon, Blaydon-on-Tyne,
Tyne and Wear, NE21 5LA

£140,000

🏠 x 3 🚿 x 2 🚻 x 1

Tenure

Freehold

On Street parking

Property features

- ✓ Three bedrooms
- ✓ Terrace house
- ✓ Situated in Blaydon
- ✓ Garden to front and rear
- ✓ EPC Rating C

Key Information

- ✓ Council Tax: Band A
- ✓ EPC Rating: C
- ✓ Heating supply: Gas

Description

We are pleased to present this charming three-bedroom terrace house located in the highly desirable area of Blaydon. This property is conveniently situated near local amenities and excellent transport links, making it an ideal choice for families and commuters alike.

Upon entering, you are welcomed by a spacious entrance hall that leads to a comfortable lounge, perfect for relaxation and entertaining. The well-appointed kitchen is designed for functionality and ease, providing a delightful space for culinary creations. A convenient downstairs WC adds to the practicality of the layout.

As you ascend the stairs to the first floor, you will find the master bedroom, which offers a peaceful retreat, along with a family bathroom that serves the home's occupants. Additionally, there are two more cosy bedrooms that are perfect for guests, children, or a home office setup.

Externally, the property boasts inviting gardens to both the front and rear, providing outdoor space to enjoy, garden, or entertain. This home offers a wonderful blend of comfort and convenience in a vibrant community.

Council Tax Band: A

Tenure: Freehold

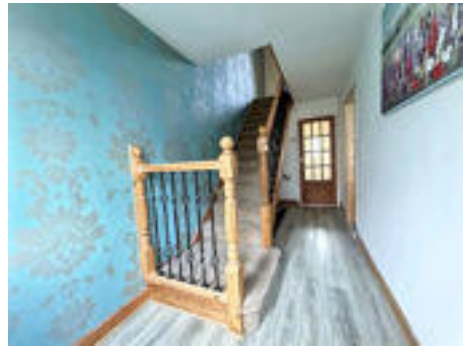
Price: £140,000

Property Type: Terraced House

Parking: On Street

Heating: Gas

Hall



Lounge

3.20m x 3.88m (10'5" x 12'8")



Kitchen

3.57m x 3.69m (11'8" x 12'1")



Cloakroom W/C

Landing



Master bedroom

3.44m x 3.42m (11'3" x 11'2")



Bedroom two

2.90m x 3.48m (9'6" x 11'5")



Bedroom three

2.48m x 2.30m (8'1" x 7'6")



Bathroom

1.99m x 1.62m (6'6" x 5'3")



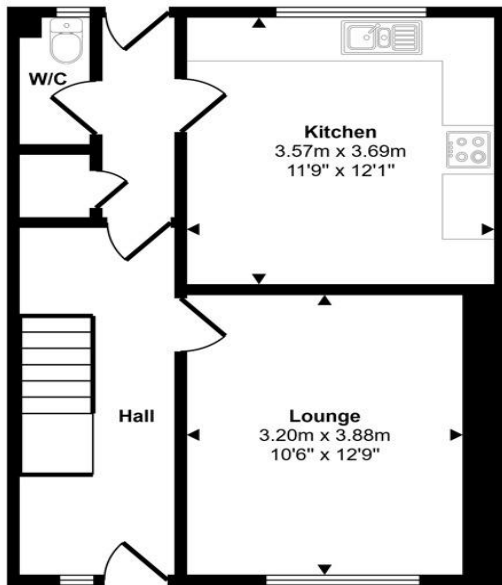
Front garden



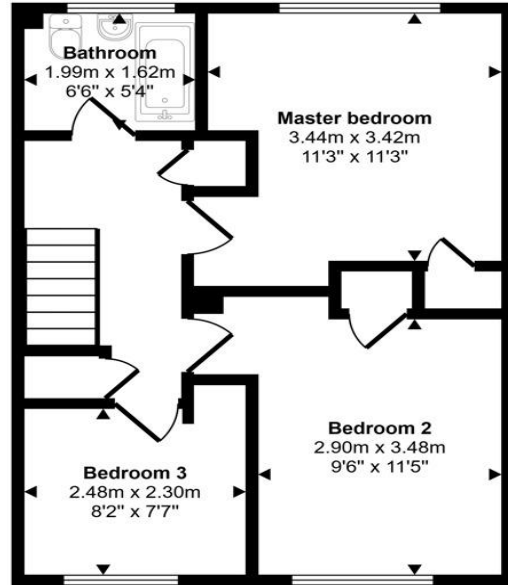
Rear garden



Approx Gross Internal Area
85 sq m / 920 sq ft



Ground Floor
Approx 42 sq m / 457 sq ft



First Floor
Approx 43 sq m / 463 sq ft

This floorplan is only for illustrative purposes and is not to scale. Measurements of rooms, doors, windows, and any items are approximate and no responsibility is taken for any error, omission or mis-statement. Icons of items such as bathroom suites are representations only and may not look like the real items. Made with Made Snappy 360.

Energy Efficiency Rating		
	Current	Potential
<i>Very energy efficient - lower running costs</i>		
(92-100) A		
(81-91) B		
(69-80) C	72	78
(55-68) D		
(39-54) E		
(21-38) F		
(1-20) G		
<i>Not energy efficient - higher running costs</i>		
England, Scotland & Wales	EU Directive 2002/91/EC	

High Axwell, Blaydon, Blaydon-on-Tyne, Tyne and Wear, NE21 5LA

Contact your local branch today for more information on this property:
G&T Properties Dudley Road, Brierley Hill, West Midlands, DY5 1HA,
<https://www.gandtproperties.co.uk/>

These particulars, whilst believed to be accurate are set out as a general outline only for guidance and do not constitute any part of an offer or contract. Intending purchasers should not rely on them as statements of representation of fact, but must satisfy themselves by inspection or otherwise as to their accuracy. No person in this firm's employment has the authority to make or give any representation or warranty in respect of the property.

