



## HMO in TS18

Bishopton Lane, Stockton-on-Tees,  
Durham, TS18 1PX

**£130,000** Starting Bid

Tenure

**Freehold**

On Street parking

## Property features

- ✓ Investment Opportunity
- ✓ 6 Bedroom HMO
- ✓ Ground Floor Shower Room and Upstairs Bathroom
- ✓ Within Reach to Local Schools, Shops, Amenities and Transport

## Description

\*\*\*\*\*6 Bed HMO Property\*\*\*\*\*

An excellent opportunity to acquire a fully tenanted and income-generating 6-bedroom HMO property situated in a popular and well-established residential location on Bishopton Lane, Stockton-on-Tees. The property is being sold with tenants, providing an immediate rental income for investors seeking a ready-made addition to their portfolio.

This HMO is fully tenanted and generates an annual income of approximately £30,120.

Internally, the accommodation is arranged over two floors and briefly comprises six letting bedrooms, a spacious communal kitchen, separate communal utility room, a ground floor shower room and an additional first floor bathroom. The property also benefits from ample on-street parking.

Bishopton Lane is conveniently located within reach to Stockton Town Centre and offers excellent access to local shops, public transport routes and surrounding areas including Middlesbrough and Durham via the A19 and A66 road networks.

For more information and to arrange a internal inspection please contact the Stockton branch today.

Price: Starting Bid £130,000

Property Type: HMO

Business Type: Other/Unspecified

Internal Size: 1797 Square Feet

External Size: 1797 Square Feet

Parking: On Street

## Location

The Subject property is located along Bishopton Lane, Stockton-on-Tees, and is ideally located within reach to local, amenities, schools, shops and transport links.



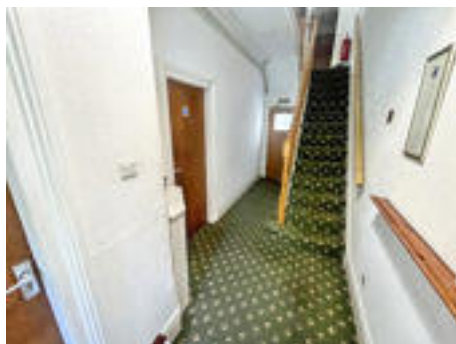
## Accommodation

The accommodation briefly comprises: Communal Kitchen, communal utility room, downstairs bathroom, upstairs bathroom and 6 bedrooms.



## EPC

Available upon request



## Council Tax

Band A



## Tenure

Freehold





This floor plan is for illustrative purposes only. It is not drawn to scale. Any measurements, floor areas (including any total floor area), openings and orientations are approximate. No details are guaranteed, they cannot be relied upon for any purpose and do not form any part of any agreement. No liability is taken for any error, omission or misstatement. A party must rely upon its own inspection(s). Powered by [www.Propertybox.io](http://www.Propertybox.io)

Bishopton Lane, Stockton-on-Tees, Durham, TS18 1PX

Contact your local branch today for more information on this property:  
**G&T Properties Dudley Road, Brierley Hill, West Midlands, DY5 1HA,**  
<https://www.gandtproperties.co.uk/>

These particulars, whilst believed to be accurate are set out as a general outline only for guidance and do not constitute any part of an offer or contract. Intending purchasers should not rely on them as statements of representation of fact, but must satisfy themselves by inspection or otherwise as to their accuracy. No person in this firm's employment has the authority to make or give any representation or warranty in respect of the property.

