



2 bed terraced house to buy in

Chestnut Street, Ashington,
Northumberland, NE63 0QP

£49,000 Starting Bid

🏠 x2 🚿 x1 🚻 x1

Tenure

Freehold

On Street parking

Property features

- ✓ For Sale By Auction
- ✓ Terraced House
- ✓ Two Bedrooms
- ✓ Garden To Front
- ✓ EPC Rating D

Key Information

- ✓ Council Tax: Band A
- ✓ EPC Rating: D
- ✓ Heating supply: Gas
- ✓ Electric supply: National Grid
- ✓ Water supply: Direct mains water
- ✓ Mobile signal: Good

Description

FOR SALE BY AUCTION - TERRACED HOUSE - TWO BEDROOMS - LOUNGE/DINER - GARDEN TO FRONT - COMBI BOILER - VIEW NOW

Pattinson Auction offer for sale this two bedroom terraced house situated on Chestnut Street in Ashington, Northumberland. Close to local primary and secondary schools and the town centre with an array of shops, supermarkets, leisure facilities and travel links including the new train station linking directly into Newcastle City Centre.

Warmed via gas central heating (Baxi combi boiler) and with Upvc double glazing throughout.

Briefly comprising; entrance porch, hallway, lounge, kitchen, rear hallway and ground floor bathroom. To the first floor two bedrooms. Externally to the front an enclosed town garden. To the rear on street.

To arrange your viewing please contact our Ashington Team

Council Tax Band: A

Tenure: Freehold

Price: Starting Bid £49,000

Property Type: Terraced House

Parking: On Street

Construction materials: Brick and block

Roofing type: Slate tiles

Heating: Gas

Electric: National Grid

Water: Direct mains water

Sewerage: Standard UK domestic

Mobile signal coverage: Good

Porch

Via main access door to the front, windows to the front and side, tiled flooring.



Hallway

Stairs to the first floor, radiator.



Lounge

5.72m x 4.85m (18'9" x 15'10")

Window to the front, wall mounted electric fire, understair alcove, open archway into the kitchen, radiator.



Lounge Additional



Kitchen

3.66m x 3.12m (12'0" x 10'2")

Two windows and secure access door to the rear. Fitted with a range of wood effect wall, floor and drawer units with black roll edge worktops and matching trims, stainless steel sink and drainer with mixer tap, integrated electric oven and hob with chimney style extractor over, plumbing for washing machine, radiator.



Kitchen Additional



Inner Hallway

Built in double storage cupboard housing the Baxi gas combi boiler.



Bathroom

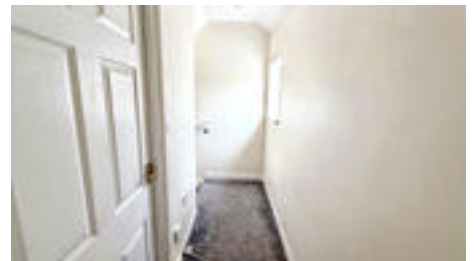
1.97m x 1.63m (6'5" x 5'4")

Frosted window to the front, panelled bath, wash hand basin, w.c, radiator.



First Floor Landing

Window to the rear.



Bedroom One

4.95m x 2.95m (16'2" x 9'8")

Window to the front, loft hatch to ceiling, radiator.



Bedroom Two

3.86m x 2.72m (12'7" x 8'11")

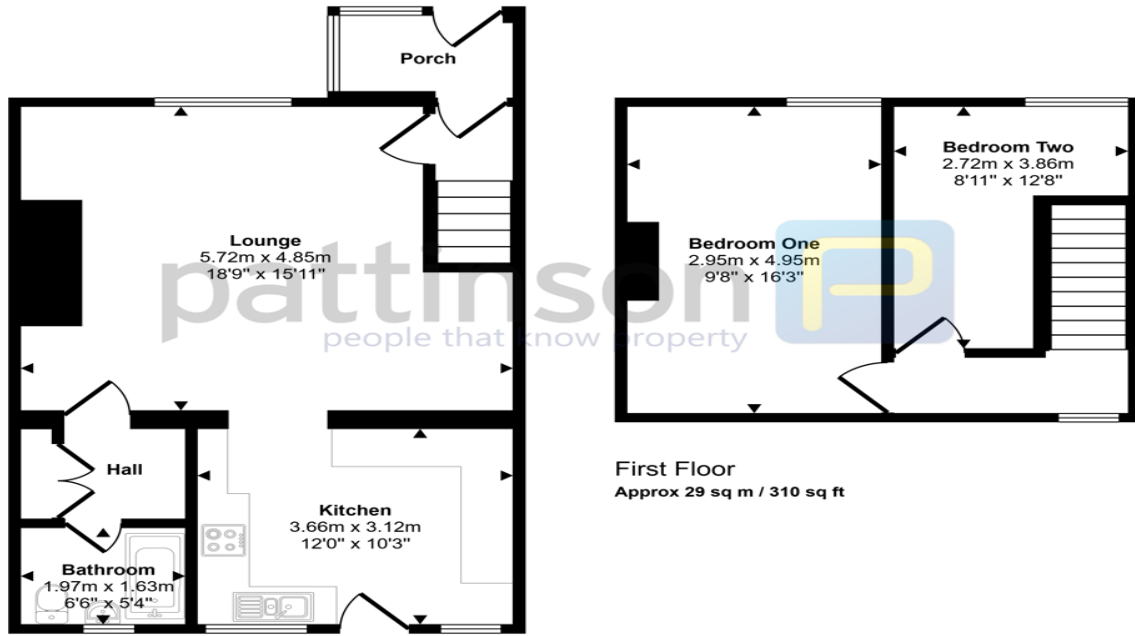
Window to the front, radiator.
L-shaped.



Rear Elevation



Approx Gross Internal Area
80 sq m / 858 sq ft



Ground Floor
Approx 51 sq m / 548 sq ft

First Floor
Approx 29 sq m / 310 sq ft

This floorplan is only for illustrative purposes and is not to scale. Measurements of rooms, doors, windows, and any items are approximate and no responsibility is taken for any error, omission or mis-statement. Icons of items such as bathroom suites are representations only and may not look like the real items. Made with Made Snappy 360.

Energy Efficiency Rating		
	Current	Potential
<i>Very energy efficient - lower running costs</i>		
(92-100) A		
(81-91) B		81
(69-80) C		
(55-68) D	65	
(39-54) E		
(21-38) F		
(1-20) G		
<i>Not energy efficient - higher running costs</i>		
England, Scotland & Wales	EU Directive 2002/91/EC	

Chestnut Street, Ashington, Northumberland, NE63 0QP

Contact your local branch today for more information on this property:
G&T Properties Dudley Road, Brierley Hill, West Midlands, DY5 1HA,
<https://www.gandtproperties.co.uk/>

These particulars, whilst believed to be accurate are set out as a general outline only for guidance and do not constitute any part of an offer or contract. Intending purchasers should not rely on them as statements of representation of fact, but must satisfy themselves by inspection or otherwise as to their accuracy. No person in this firm's employment has the authority to make or give any representation or warranty in respect of the property.

