



## 3 bed detached house to buy in

Chiltern Close, Ashington,  
Northumberland, NE63 0HZ

# £230,000

🏠 x3 🚗 x3 🚪 x1

Tenure

**Freehold**

Driveway parking

## Property features

✓ EPC Rating C

## Key Information

- ✓ Council Tax: Band C
- ✓ EPC Rating: C
- ✓ Heating supply: Gas

## Description

\*\*\*DETACHED HOUSE - SOUGHT AFTER LOCATION - THREE BEDROOMS - MASTER EN-SUITE - SPACIOUS LOUNGE/DINER - CONSERVATORY - INTEGRATED KITCHEN - UTILITY - CLOAKS - WELL PRESENTED - WEST FACING GARDEN - DOUBLE DRIVEWAY - NO UPPER CHAIN - MUST BE VIEWED\*\*\*

Pattinson Estate Agents are proud to present a rare opportunity to purchase this three bedroom detached house situated on Chiltern Close in Wansbeck Manor, Ashington. A sought after location ideally situated close to local primary and secondary schools, shops, amenities, travel links to neighbouring towns and just a short distance from the coast. A fantastic family home which is well presented throughout. Warmed via gas central heating (combi boiler) and Upvc double glazed throughout. Sold with no upper chain, early viewings are essential to appreciate the accommodation on offer.

Briefly comprising; entrance hallway, kitchen, utility room (formerly the garage), cloakroom, lounge/diner and conservatory. To the first floor master bedroom with en-suite facilities, two further bedrooms and family bathroom. Externally to the front an open plan lawned area with double driveway. To the rear a west facing enclosed low maintenance garden with shed and side gate for access.

To arrange your viewing please contact our Ashington Team

EPC Rating TBC

Council Tax Band: C

Tenure: Freehold

Price: £230,000

Property Type: Detached House

Parking: Driveway

Heating: Gas

## Entrance Hallway

Via main access door to front, alarm panel, wood effect flooring, radiator.



## Kitchen

3.11m x 2.45m (10'2" x 8'0")

Window to front. Fitted with a range of cream high gloss wall, floor and drawer units with brushed steel handles, marbled roll edge worktops and tiled splashbacks, black resin one and a half sink and drainer with mixer tap, integrated four burner gas hob with extractor over, separate integrated double electric oven, integrated fridge, integrated dishwasher, wood effect flooring, radiator.



## Kitchen Additional



## Utility

3.55m x 2.45m (11'7" x 8'0")

Formerly the garage. Converted to create a utility room and cloakroom. The utility area is fitted with a range of light wood wall and base units with black square edge worktops and tiled splashbacks, stainless steel sink and drainer with mixer tap, washing machine, tumble dryer, housed Baxi gas combi boiler, vinyl flooring. Access door to the side.



## Utility Additional



## Cloakroom

Pedestal wash hand basin with tiled splashback, push flush w.c, vinyl flooring.



## Lounge Diner

6.13m x 4.82m (20'1" x 15'9")

Box bay window to the rear with french doors opening into the rear garden. Feature fireplace and hearth with electric flame effect fire, stairs to first floor, two radiators.



## Lounge/Diner Additional



## Lounge/Diner Additional (2)



## Conservatory

2.79m x 2.16m (9'1" x 7'1")

Upvc construction with dwarf wall, vaulted roof and access door into the rear garden. Tiled flooring, radiator.



## Conservatory Additional



## First Floor Landing

Window to side. Loft access hatch to ceiling with drop down ladder.



## Master Bedroom

4.03m x 3.54m (13'2" x 11'7")

Window to front. Fitted four door wardrobe and dressing table with drawers, radiator. En-suite facilities.



## Master Bedroom Additional



## En-Suite

2.39m x 1.38m (7'10" x 4'6")

Frosted window to side. Wash hand basin and w.c set in vanity unit with storage, walk in shower cubicle with white tray, chrome shower and glass screen door, chrome heated towel rail, fully tiled.



## En-Suite Additional



## Bedroom Two

3.55m x 2.84m (11'7" x 9'3")

Window to rear, double fitted sliding door wardrobe, radiator.



## Bedroom Two Additional



## Bedroom Three

3.26m x 2.53m (10'8" x 8'3")

Currently used as a study. Window to front, fitted three door wardrobe, radiator.



## Bedroom Three Additional



## Bathroom

2.62m x 1.94m (8'7" x 6'4")

Frosted window to rear. Fitted with a three piece white suite comprising panelled bath with shower over and glass screen door, pedestal wash hand basin and w.c, built in storage cupboard, chrome heated towel rail, vinyl flooring.



## Rear Garden



## Rear Elevation



## Rear View



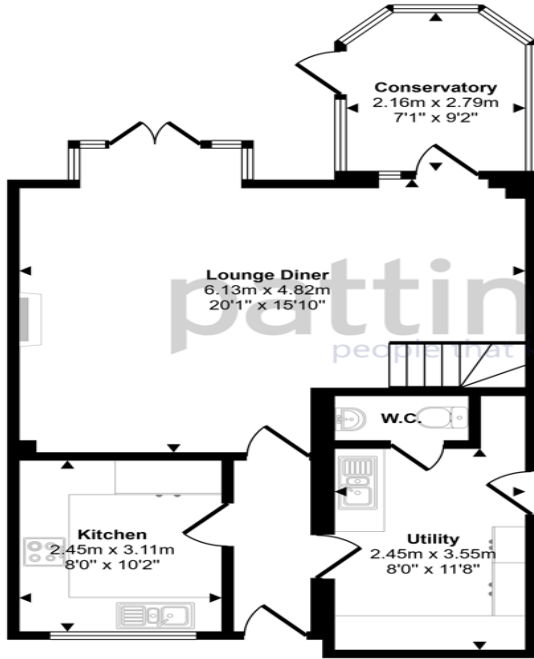
## Front View



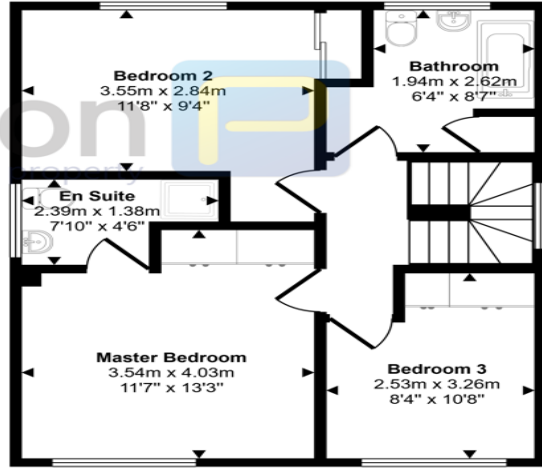
## Floor Plan



Approx Gross Internal Area  
107 sq m / 1153 sq ft



**Ground Floor**  
Approx 58 sq m / 619 sq ft



**First Floor**  
Approx 50 sq m / 534 sq ft

This floorplan is only for illustrative purposes and is not to scale. Measurements of rooms, doors, windows, and any items are approximate and no responsibility is taken for any error, omission or mis-statement. Icons of items such as bathroom suites are representations only and may not look like the real items. Made with Made Snappy 360.

Energy Efficiency Rating		
	Current	Potential
<i>Very energy efficient - lower running costs</i>		
(92-100) <b>A</b>		
(81-91) <b>B</b>		84
(69-80) <b>C</b>	74	
(55-68) <b>D</b>		
(39-54) <b>E</b>		
(21-38) <b>F</b>		
(1-20) <b>G</b>		
<i>Not energy efficient - higher running costs</i>		
<b>England, Scotland &amp; Wales</b>	EU Directive 2002/91/EC	

Chiltern Close, Ashington, Northumberland, NE63 0HZ

Contact your local branch today for more information on this property:  
**G&T Properties Dudley Road, Brierley Hill, West Midlands, DY5 1HA,**  
<https://www.gandtproperties.co.uk/>

These particulars, whilst believed to be accurate are set out as a general outline only for guidance and do not constitute any part of an offer or contract. Intending purchasers should not rely on them as statements of representation of fact, but must satisfy themselves by inspection or otherwise as to their accuracy. No person in this firm's employment has the authority to make or give any representation or warranty in respect of the property.

