



4 bed semi-detached house to buy in NE4

Tiverton Avenue, Grainger Park,
Newcastle upon Tyne, Tyne and Wear,
NE4 8SN

£400,000 Offers Over

🏠 x4 🪑 x3 🚗 x3

Tenure

Freehold

Allocated parking

Property features

- ✓ Semi Detachetd House - Four Bedrooms
- ✓ Must be Viewed
- ✓ Off Street Parking
- ✓ Viewing Recommended

Key Information

- ✓ Council Tax: Band B
- ✓ Heating supply: Gas

Description

Spacious Four-Bedroom Semi-Detached Home – Tiverton Avenue, Grainger Park, Newcastle upon Tyne

We are delighted to offer this extremely well-presented and spacious four-bedroom semi-detached house, ideally located on the ever-popular Tiverton Avenue in Grainger Park, Newcastle upon Tyne. This exceptional property provides generous and versatile living accommodation, perfectly suited to larger or multi-generational families.

The ground floor boasts three spacious reception rooms, offering a wealth of flexibility for family living. One of these reception rooms has previously been used as a fifth bedroom, demonstrating the adaptability of the layout to suit a range of lifestyle needs. In addition, the ground floor includes a convenient bedroom, providing excellent accommodation options for extended family members or guests. A particular highlight is the dedicated sauna room, offering a private space for relaxation and wellness. The property also benefits from a flexible loft space, further enhancing its overall practicality.

Internally, the home is tastefully presented throughout and features a spacious and flowing layout that must be seen to be fully appreciated. The bright and well-proportioned rooms offer comfort, style, and functionality, combining modern finishes with traditional proportions.

Located in a well-established and highly desirable residential area, the property is within easy reach of a wide range of local amenities, well-regarded schools, and excellent transport links.

Buyers are advised to satisfy their own enquiries regarding building regulations for any existing extensions or alterations.

This is a truly impressive and unique family home, offering space, style, and flexibility in one of Newcastle's most sought-after neighbourhoods. Early viewing is strongly recommended.

Council Tax Band: B

Tenure: Freehold

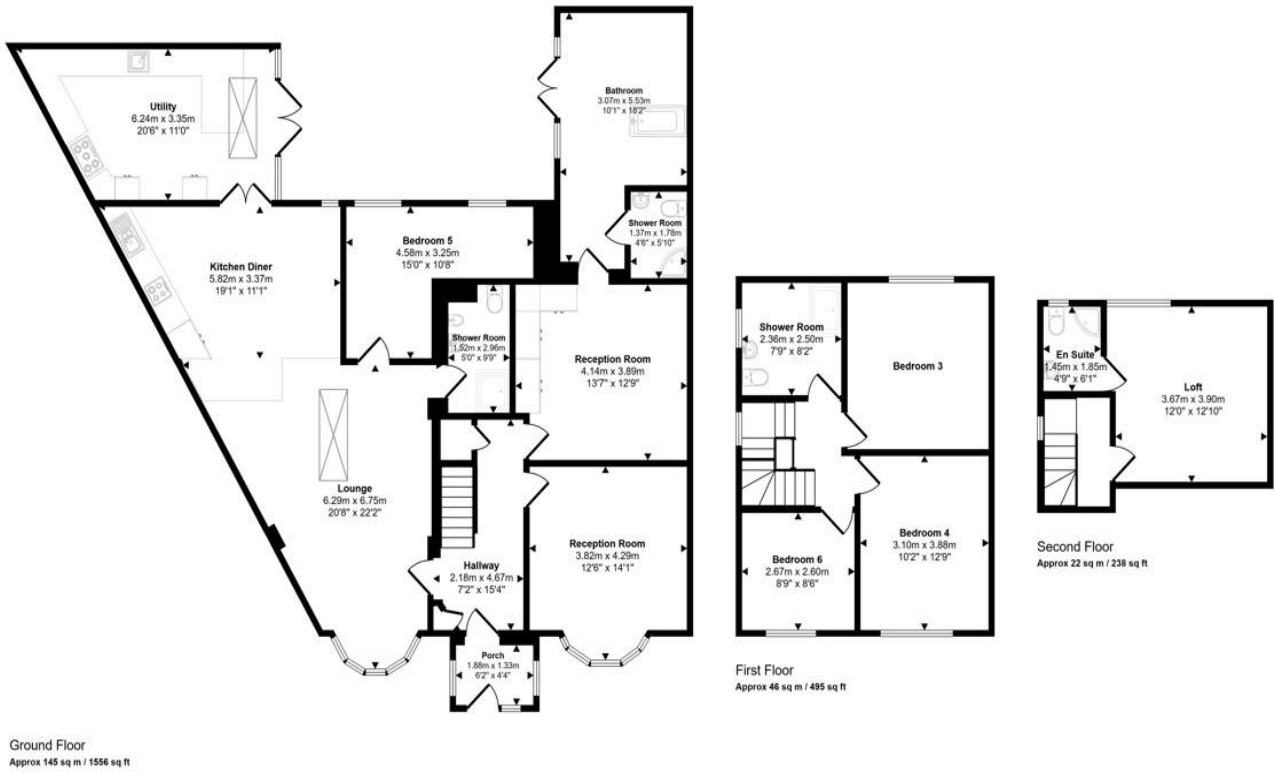
Price: Offers Over £400,000

Property Type: Semi-detached house

Parking: Allocated

Heating: Gas

Approx Gross Internal Area
213 sq m / 2290 sq ft



This floorplan is only for illustrative purposes and is not to scale. Measurements of rooms, doors, windows, and any items are approximate and no responsibility is taken for any error, omission or mis-statement. Icons of items such as bathroom suites are representations only and may not look like the real items. Made with Made Spraggy 360.

Tiverton Avenue, Grainger Park, Newcastle upon Tyne, Tyne and Wear, NE4 8SN

Contact your local branch today for more information on this property:
G&T Properties Dudley Road, Brierley Hill, West Midlands, DY5 1HA,
<https://www.gandtproperties.co.uk/>

These particulars, whilst believed to be accurate are set out as a general outline only for guidance and do not constitute any part of an offer or contract. Intending purchasers should not rely on them as statements of representation of fact, but must satisfy themselves by inspection or otherwise as to their accuracy. No person in this firm's employment has the authority to make or give any representation or warranty in respect of the property.

