



To buy

3 bed terraced house to buy in

Port Sunlight Grove, Stockton,
Stockton-on-Tees, Durham, TS19 8LE

£138,000 Offers over

🛏 x 3 🚿 x 2 🚻 x 1

Tenure

Freehold

Allocated parking

Property features

- ✓ EPC RATING B
- ✓ MODERN WELL PRESENTED HOME
- ✓ SPACIOUS LOUNGE
- ✓ OPEN PLAN KITCHEN AND DINING AREA
- ✓ EPC Rating B

Key Information

- ✓ Council Tax: Band C
- ✓ EPC Rating: B
- ✓ Heating supply: Gas
- ✓ Electric supply: National Grid
- ✓ Water supply: Direct mains water
- ✓ Mobile signal: Good

Description

A fantastic modern built home in well presented condition and offering a chance to move in and enjoy from day one. Positioned in a pleasant cul-de-sac, The University of North Tees Hospital is close by as are local amenities such as Tesco, Lidl and there is a parade of shops off Hardwick Road.

The accommodation is highly suited to a growing family or a first time buyer and to the ground floor this includes: An entrance hall, a cloak room W.C., the lounge is spacious and has the stairs leading to the first floor, to the rear there is a modern fitted kitchen with a dining area and French doors to the rear. The first floor has a landing and two generously sized bedrooms while the third bedroom offers a built in cupboard. The bathroom is equipped with a modern white three piece suite and includes a shower over the bath. Upvc double glazing throughout and the home is heated by a combination boiler. To the outside there is a garden to the front, the garden to the rear is of a good size and will come with the summer house that has power and lighting. This home also provides you with two car parking spaces that are located to the rear.

Selling with the added benefit of No Onward Chain.

Council Tax Band: C

Tenure: Freehold

Price: Offers over £138,000

Property Type: Terraced House

Parking: Allocated, Driveway, Rear

Construction materials: Brick and block

Roofing type: Concrete roof tiles

Heating: Gas

Electric: National Grid

Water: Direct mains water

Sewerage: Standard UK domestic

Air conditioning: No

Mobile signal coverage: Good

Accommodation

Ground floor

Entrance

Door to the front, door leads into the living room.



Cloak Room W/C

Fitted with a wash hand basin and a W.C.



Living Room

4.79m x 4.54m (15'8" x 14'10")

Stairs to the first floor, window.



Kitchen and dining area

4.54m x 2.52m (14'10" x 8'3")

Fitted with a range of wall, base and drawer units, work surfaces incorporate a sink and drainer. Built in hob with an oven below and a hood over, room for a fridge freezer and plumbed for a washing machine.

Window and French doors to the rear.



First Floor

Bedroom 1

4.05m x 2.58m (13'3" x 8'5")

Window.



Bedroom 2

3.27m x 2.58m (10'8" x 8'5")

Window.



Bedroom 3

2.70m x 1.90m (8'10" x 6'2")

Window and a storage cupboard.



Externally

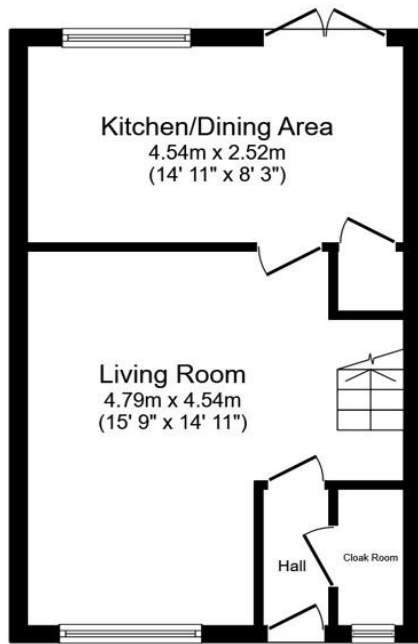
Garden to the front and garden to the rear with a summerhouse. The property also provides two car parking spaces to the rear.

Bathroom

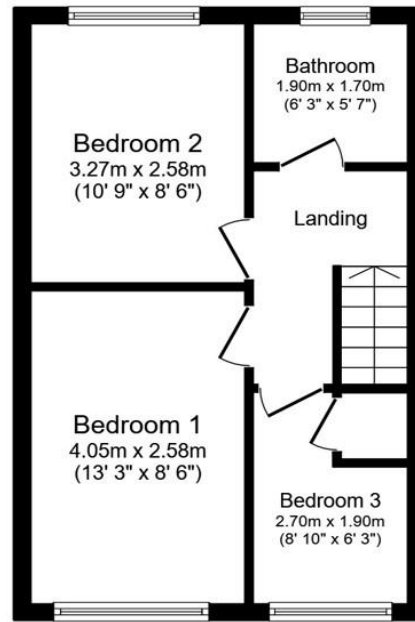
1.90m x 1.70m (6'2" x 5'6")

Fitted with a modern white three piece suite. Window.





Ground Floor
Floor area 33.6 m² (362 sq.ft.)



First Floor
Floor area 33.6 m² (362 sq.ft.)

TOTAL: 67.3 m² (724 sq.ft.)

This floor plan is for illustrative purposes only. It is not drawn to scale. Any measurements, floor areas (including any total floor area), openings and orientations are approximate. No details are guaranteed, they cannot be relied upon for any purpose and do not form any part of any agreement. No liability is taken for any error, omission or misstatement. A party must rely upon its own inspection(s). Powered by www.Propertybox.io

Energy Efficiency Rating		Current	Potential
<i>Very energy efficient - lower running costs</i>			
(92-100) A			95
(81-91) B		82	
(69-80) C			
(55-68) D			
(39-54) E			
(21-38) F			
(1-20) G			
<i>Not energy efficient - higher running costs</i>			
England, Scotland & Wales		EU Directive 2002/91/EC	

Port Sunlight Grove, Stockton, Stockton-on-Tees, Durham, TS19 8LE

Contact your local branch today for more information on this property:
G&T Properties Dudley Road, Brierley Hill, West Midlands, DY5 1HA,
<https://www.gandtproperties.co.uk/>

These particulars, whilst believed to be accurate are set out as a general outline only for guidance and do not constitute any part of an offer or contract. Intending purchasers should not rely on them as statements of representation of fact, but must satisfy themselves by inspection or otherwise as to their accuracy. No person in this firm's employment has the authority to make or give any representation or warranty in respect of the property.

