



3 bed semi-detached house to buy in WA3

Knowsley Avenue, Golborne, Warrington, Greater Manchester, WA3 3LS

£60,000 Starting Bid

🏠 x3 🚗 x1 🚻 x2

Tenure

Freehold

Property features

- ✓ Being Sold via Secure Sale online bidding. Terms and Conditions
- ✓ Ideally Located for Local Schools, Bars, Restaurants & Transport
- ✓ Three Bedroom
- ✓ Cash Buyers Only
- ✓ EPC Rating D

Key Information

- ✓ Council Tax: Band A
- ✓ EPC Rating: D
- ✓ Heating supply: Gas

Description

Three bedroom semi detached property.

Situated in the village of Golborne, and ideally located for local shops & schools.

Close to the village centre where you will find shops, bars, cafes and amenities.

PLEASE NOTE: The Property is of None Standard Construction, & Potential Buyers Should Check with Their Mortgage Provider Before Enquiry.

Council Tax Band: A

Tenure: Freehold

Price: Starting Bid £60,000

Property Type: Semi-detached house

Heating: Gas

Ground Floor

Hallway

Lounge

Dining Room

Kitchen

First Floor Landing

Master Bedroom

Bedroom Two

Bedroom Three

Bathroom

Outside

Front Garden

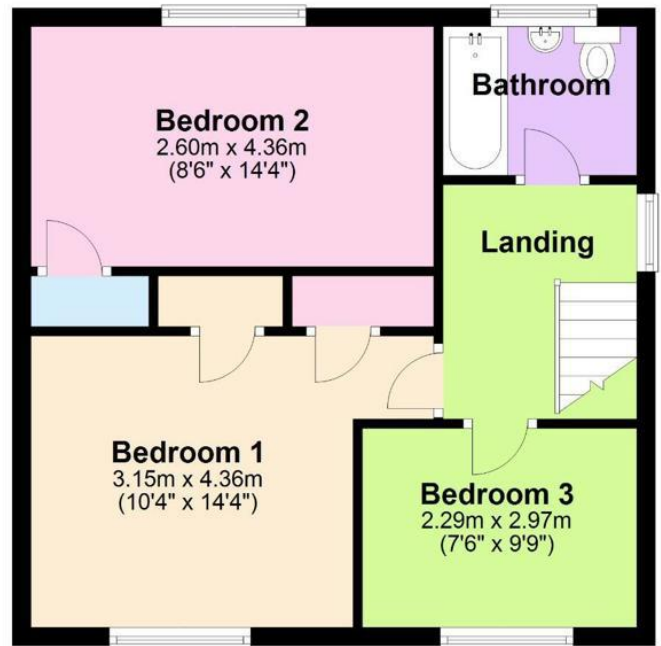
Rear Garden

Out Buildings

Ground Floor



First Floor



Total area: approx. 85.6 sq. metres (921.6 sq. feet)

Whilst every attempt has been made to ensure the accuracy of the floorplan shown, all measurements, positioning, fixtures, fittings and any other data shown are an approximate interpretation for illustrative purposes only, and are not to scale. No responsibility is taken for any error, omission, miss-statement or use of data shown. Plan produced using PlanUp.

Energy Efficiency Rating		Current	Potential
Very energy efficient - lower running costs			
(92-100) A			
(81-91) B			
(69-80) C			71
(55-68) D		56	
(39-54) E			
(21-38) F			
(1-20) G			
Not energy efficient - higher running costs			
England, Scotland & Wales		EU Directive 2002/91/EC	

Knowsley Avenue, Golborne, Warrington, Greater Manchester, WA3 3LS

Contact your local branch today for more information on this property:
G&T Properties Dudley Road, Brierley Hill, West Midlands, DY5 1HA,
<https://www.gandtproperties.co.uk/>

These particulars, whilst believed to be accurate are set out as a general outline only for guidance and do not constitute any part of an offer or contract. Intending purchasers should not rely on them as statements of representation of fact, but must satisfy themselves by inspection or otherwise as to their accuracy. No person in this firm's employment has the authority to make or give any representation or warranty in respect of the property.

