



2 bed apartment to buy in PO5

Elm Grove, Southsea, Hampshire, PO5 1JF

£70,000 Starting Bid

🏠 x2 🚗 x1 🚲 x1

Tenure

Leasehold

On Street parking

Property features

- ✓ Being Sold via Secure Sale online bidding. Terms & Conditions apply.
- ✓ Two Bedroom Flat
- ✓ Close to Local Amenities and Transport Links
- ✓ Central Location
- ✓ EPC Rating E

Key Information

- ✓ Council Tax: Band A
- ✓ EPC Rating: E
- ✓ Heating supply: Electric

Description

Pattinson Auction are delighted to offer this well presented top floor two bedroom flat in the popular location of Central Southsea, the property is located on Elm Grove, offering great access to local amenities and transport links.

This property consists of two good sized bedrooms, tiled bathroom with shower over bath, fitted kitchen with lounge/dining area, further benefits include double glazing, security entrance and electric heaters throughout.

Council Tax Band: A

Tenure: Leasehold

Length of Lease: 87

Annual Ground Rent Amount: £150.00

Annual Service Charge Amount: £1,390.00

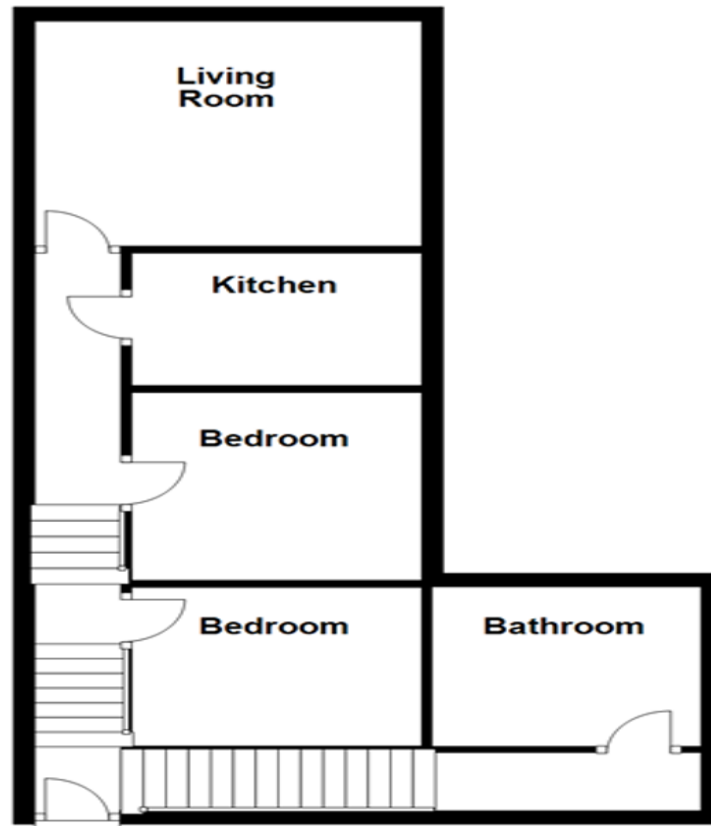
Price: Starting Bid £70,000


Property Type: Apartment

Parking: On Street

Heating: Electric

Ground Floor



Energy Efficiency Rating		
	Current	Potential
<i>Very energy efficient - lower running costs</i>		
(92-100) A		
(81-91) B		
(69-80) C		
(55-68) D		61
(39-54) E	41	
(21-38) F		
(1-20) G		
<i>Not energy efficient - higher running costs</i>		
England, Scotland & Wales		EU Directive 2002/91/EC 

Elm Grove, Southsea, Hampshire, PO5 1JF

Contact your local branch today for more information on this property:
G&T Properties Dudley Road, Brierley Hill, West Midlands, DY5 1HA,
<https://www.gandtproperties.co.uk/>

These particulars, whilst believed to be accurate are set out as a general outline only for guidance and do not constitute any part of an offer or contract. Intending purchasers should not rely on them as statements of representation of fact, but must satisfy themselves by inspection or otherwise as to their accuracy. No person in this firm's employment has the authority to make or give any representation or warranty in respect of the property.

